



Ongar Road, Romford, RM4

BUTLER & STAG





**Smart and well-presented two bedroom apartment, located on the ground floor of a modern purpose built block.**



- Ground Floor
- Off Street Parking
- Communal Rear Garden
- Modern Two Bedroom Apartment
- Available Now
- Village Location

Accessed from the peaceful rear courtyard via a secure communal entrance, the accommodation comprises: good size living room which is bright and spacious with a patio door that leads to the communal rear garden, separate and fully fitted kitchen with sleek units, two bedrooms and a family bathroom.

Abridge is a beautiful village that is conveniently located for the nearby towns of Theydon Bois (with central line station), Chigwell and Loughton with transport that links to the M25 and M11. The village offers several pubs and restaurants, a coffee bar, newsagents and a primary school.

Available Now

Council Tax Band B



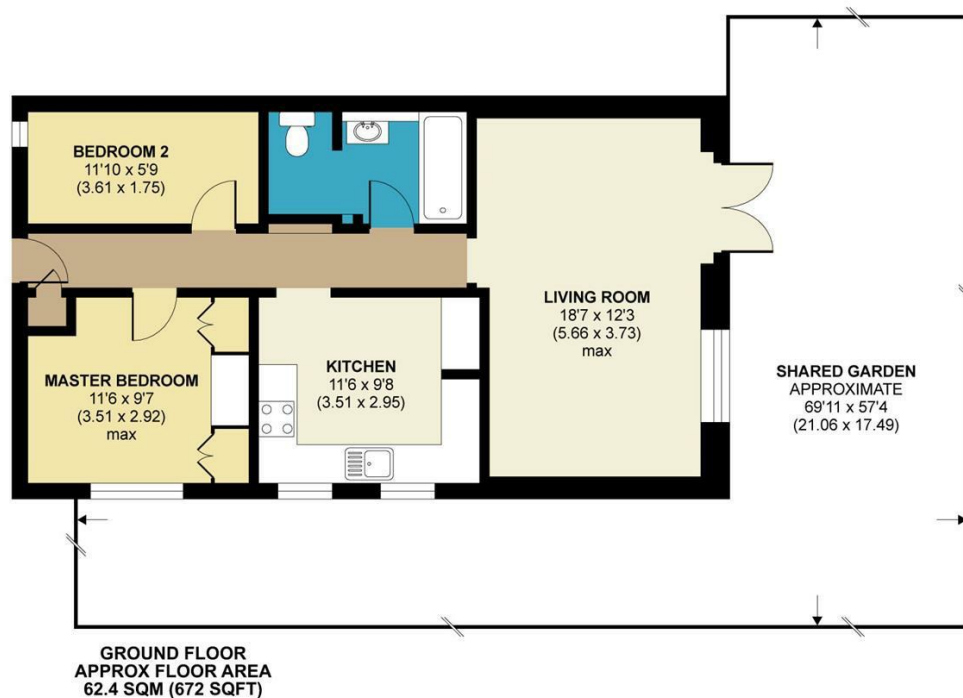






## Ongar Road, Abridge, Romford, RM4

APPROX. GROSS INTERNAL FLOOR AREA 672 SQ FT 62.4 SQ METRES



Whilst every attempt has been made to ensure the accuracy of the floor plan contained here, measurements of doors, windows and rooms are approximate and no responsibility is taken for any error, omission or misstatement. These plans are for representation purposes only as defined by RICS Code of Measuring Practice and should be used as such by any prospective purchaser. Specifically no guarantee is given on the total square footage of the property if quoted on this plan. Any figure given is for initial guidance only and should not be relied on as a basis of valuation.

Copyright nichecom.co.uk 2018 Produced for Butler and Stag REF : 261260



# BUTLER & STAG

☎ 020 8504 9000

🏠 184 Queen's Road, Buckhurst Hill, IG9 5BD

✉ buckhursthill@butlerandstag.com

[www.butlerandstag.uk](http://www.butlerandstag.uk)

IMPORTANT NOTICE - These particulars have been prepared in good faith and they are not intended to constitute part of an offer or contract. We have not performed a structural survey on this property and the services, appliances and specific fittings have not been tested. All photographs, measurements, floor plans and distances referred to are given as a guide and should not be relied upon.